

## RICO HUMAN ANATOMY MODELS

About 1/10th natural size, showing the topography of muscles, in one piece, on base with key card. With 30 dissectable parts.



**Muscle Figure**



**Eye Model On Bony Base**

A 5 times enlarged model of the eye, sectioned horizontally, dissects into 6 parts, the upper half of the sclerotic membrane, two choroid membranes, retina with vitreous humor, lens and lower half of the sclerotic membrane. On base, with key card.

This model demonstrates the general arrangement of tissues. Stem is cut transversely, longitudinally, radially and tangentially at different planes to make the structural details very clear and the formation of various tissues easily understandable, mounted on stand, with key card. Overall dimensions 215 x 200 x 615 mm. approx



**Root Anatomy**

# RICO ELECTRONICS

For triode valve experiments, input 230 volts a.c. with built-in power supply, fitted with triode valve. Provided with three meters for HT voltage, output current and bias voltage



**Triode Characteristics Apparatus**



**Automatic Voltage Stabilizer**

All Automatic Voltage Stabilizers are compiled in a suitably sized strong steel cabinet with one moving iron AC/DC voltmeter to display input/output voltages

Am Meter, Volt & Galvometer are available in different ranges 0-3, 0-5, 0-10v, 30-0-30 Galvo



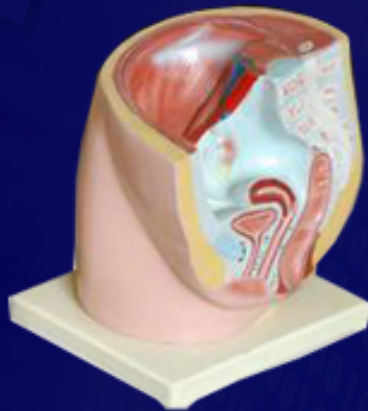
**Am Meter**

## RICO HUMAN ANATOMY MODELS

**3 part model, basic version for demonstration in schools**



**Human Skull**



**Human Female Pelvis, 2 Part**

**The model is a median section shows female genital organs with bladder and rectum. The abdominal and pelvis muscles are shown detailed. Made of non toxic plastic.**

**HIV virus model is enlarged millions of times, shows the outer lipid membrane with protein structures and the internal nucleus which contains the viral hereditary matter [RNA]. The nucleus is removable and condoms can be put underneath to provide a message regarding measures to be taken for protecting against HIV infections. Supplied without condoms, on stand, with key card.**



**Aids Virus**

# RICO HUMAN ANATOMY MODELS

Natural size 19 Parts, mounted on wooden base, without sterna-abdominal wall but with ribs, sternum, clavicle with their attachments. Thoracic and abdominal organs detachable individually, lungs, stomach, liver, intestine, Heart further sectioned in two parts for details. Half of skull cap removed and Brain can be taken out, exposes the interior of the skull, Sectioned head and neck depicts internal organs of the region, Sexless. Also available in 14 Parts as per customer requirement



Human Torso With RIBS



Fish Dissection

Showing the general structure after dissection, mounted on stand, with key card.

Life size model showing the Right side of neck dissection showing the brachiocephalic, right common carotid artery and its branches. On base. Numbered with English Key Card



A Dissection Of The Right Side Of The Neck

# RICO MICROSCOPES

Having a stable round shaped base with joint revolving arm for moving the magnifying lens over the full area of the stage. The microscope can be focussed by a smooth rack pinion system and light adjustment through a reflecting mirror. Supplied with 10x and 20x eyepieces.



**Dissecting Microscope**



**Advanced Student Microscope**

With triple revolving nosepiece, tube length 160mm with coarse & fine motion knobs, fitted with iris diaphragm & stopper for slide safety. All parts are of aluminium die-casting and oven painted.

Objectives : 10x & 40x

Huy. Eyepieces : 10x & 15x

Magnification : 100x to 600x

Same as but fitted with 360° rotatable INCLINED TUBE instead of straight one. Microscope lamp (Substage Pin Type) directly workable on 220 V, AC along with Plano Concave reflector is also supplied.



**Student Inclined Microscope 8025**

## RICO (ANALYTICAL LAB PRODUCTS)

with automatic temperature compensation, combination pH electrode and RTD probe. 3½ digit digital LED display. Useful for pH and Redox potential measurement (Table Model).



**Digital PH Meters**



**Colony Counter**

3 digit LED display Range 0-999

3½ digit LCD display covering 7 parameters: pH, conductivity, TDS, Salinity, Turbidity, Dissolved Oxygen and Temperature with rechargeable battery complete with accessories, fitted in briefcase



**Deluxe Water and Soil Analysis Kit**

# RICO PLASTICWARE & GLASSWARE

Beakers, molded in Polypropylene, have excellent clarity and very good chemical resistance. Cap.: 100ml, 250ml, 500ml, 1000ml, 2000ml



**BEAKERS**



Measuring Cylinder, moulded in Polypropylene, are single piece cylinders. Capacity : 50ml, 100ml, 250ml, 500ml, 1000ml

**MEASURING CYLINDERS**

Class B, made of Borosilicate glass, with single bore PTFE KEY, screw type.  
Cap. 10ml, 25ml, 50ml, 100ml



**BURETTES B.G GLASS**

# RICO BALANCES

0.01 to 150, 300gm



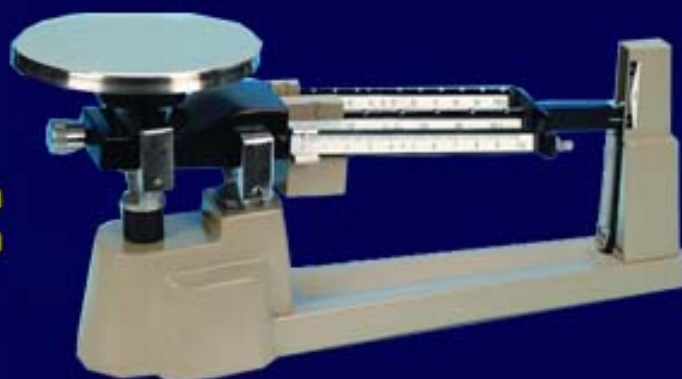
**Balance Digital**



**Lever Balance**

**These balances are designed to fill the long felt need for an inexpensive and robust single pan balance of modest size which will give consistent and rapid readings with accuracy well within the scale reading Lever Arm Balance**

**Single Pan, low form beam balance that can weigh upto 2610 & 610gm when used with supplementary masses.**



**Balance (Triple Beam)**



## RICO AUTOCLAVE AND CENTRIFUGE MACHINES

Suitable of general laboratory use as well as for field sterilization of instruments and dressings etc. dome shaped S.S.lid is provided which seals the autoclave with neoprene joint less gasket. The lid is tightened to the body when closed. The working pressure is 1.1 to 1.2 Kg./cm<sup>2</sup> (15-18 PSI) Size: 350 X 350- 325 mm



**PORTABLE AUTOCLAVE  
S.S.SEAMLESS**



**MEDICOCENTRIFUGE**

Electrically operated with speed Regulator  
a) With 4x15ml Swing out head. (3500 r.p.m.)

With solid state speed regulator, indication lamp and see through acrylic lid, with head puller but without rotor heads. Maximum speed 4000 r.p.m.  
b) -do- with 0-60 minutes Timer



**COMPACT LABORATORY CENTRIFUGE**

## RICO MICROSCOPES

**Binocular Inclined at 45 deg., Head 360 deg. Rotatable  
Transmitted Light 110V or 220V/ 12V / 10W T.H. Lamp,  
Incident Light 110V or 220V/6V 15 W T . H. Lamp with  
reflector.**



**Stereo Zoom Microscope  
(Advanced Model),**



**Research Binocular Microscopes**

**With ball bearing quadruple nosepiece having positive click stops, coarse motion with universal locking device, sub-stage Abbe condenser N . A . 1 .25 with iris diaphragm and filter holder , built - i n co - axial mechanical stage, both sides g raduated for slide manipulation with Binocular Head (assembled from coated prisms)**

**With 160mm graduated revolving screen workable on 220Volts A.C. mains Magnification Range: 10X to 100X with yarn comparison attachment, suitable for textile industries and research centre.**



**Advanced Projection Microscope,  
(For Yarn & Research Centre)**